



# BANNERMANBURKE

PROPERTIES LIMITED



**Workshop, 5 St. Marys Place, Hawick, TD9 0AN**  
**£300 Per Month**



- GREAT CENTRAL LOCATION
- LIGHT AND POWER
- SINGLE TIMBER DOOR FOR ENTRY
- LARGE GROUND FLOOR AND MEZZANINE LEVEL WORKSHOP
- SLIDING TIMBER DOORS FOR VEHICULAR ACCESS
- WINDOW TO REAR

Spacious workshop over two floors available for rent, located in the heart of town. Large double doors slide open to provide vehicular access along with a single timber door for ease of entry. Benefits from power, light and water on site and a double glazed window to the rear provides natural light. Large cupboard provides good storage and the mezzanine level is an added benefit and versatile in use. Situated in a great central location of town, a short walk to all local amenities.

### Room Sizes

GROUND FLOOR AREA - 6.42 X 5.90

MEZZANINE LEVEL - 5.83 X 6.15

### Letting Details

The workshop is available for immediate rent.

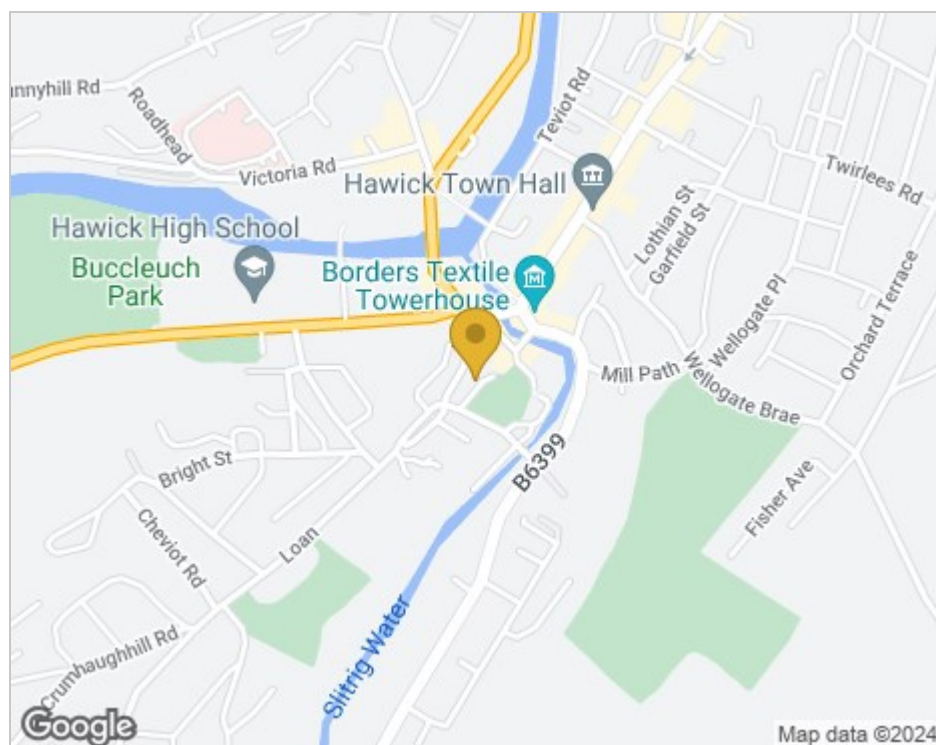
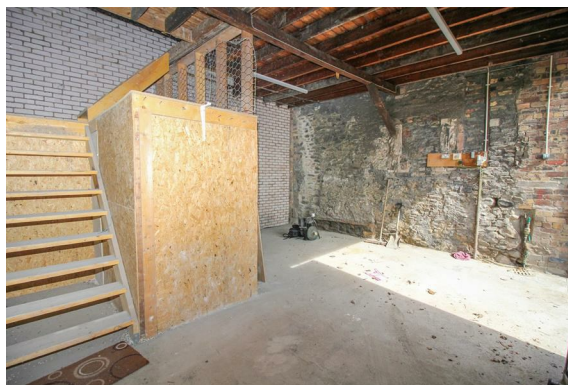
The landlords would prefer no heavy machinery use in the workshop due to residential neighbours.

The terms of the lease is for a minimum of 12 months with three months notice.

Deposit will be one month's rent £300.

Electricity usage will be additional.

The rateable value is £600 per year (however the workshop will more than likely be exempt).



### Important:

You may download, store and use the material for your own personal use and research. You may not republish, re transmit, redistribute or otherwise make the material available to any party or make the same available on any website, online service or bulletin board of your own or of any other party or make the same available in hard copy or in any other media without the website owner's express prior written consent. Bannerman Burke Properties Ltd copyright must remain on all reproductions of material taken from this website.